



DOW CORNING

## The Dow Corning Project Management System

Why Risk  
Your Reputation?

**Build with confidence using the Dow Corning  
Project Management System.**

IMPROVE EFFICIENCY • SAVE TIME • ENSURE QUALITY



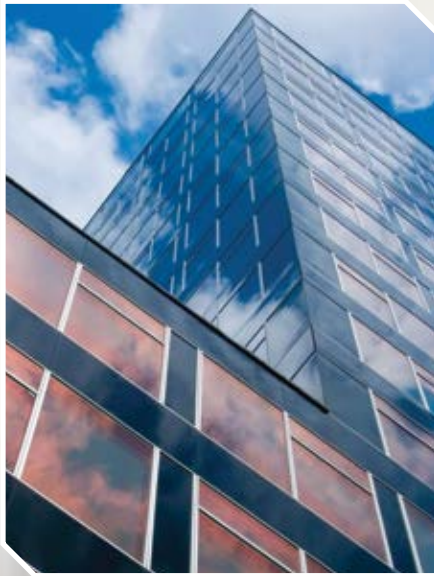
A photograph of two men, one older with grey hair and one younger with dark hair, both wearing blue shirts, leaning over a table and looking at a large architectural drawing. The older man is on the left, and the younger man is on the right. They are both focused on the drawing. In the background, another person is visible but out of focus. A large teal diagonal graphic element covers the bottom left portion of the image, containing the text.

Build it right.

Build it with  
Dow Corning.

## Confidence from initial design through completion





The Dow Corning Project Management System adds value to every step of your silicone structural glazing projects. The system is designed to provide you with confidence in the bonds between glass, stone and metal sheets to the supportive frames of your finished building. That confidence helps you minimize defects, rework and potential delays that can damage your reputation and cost you business.



From initial design through material specification and final application, the Dow Corning Project Management System is a systematic approach to quality control that helps ensure your job is done right. The system provides you with blueprint review, material testing and quality checks from Dow Corning experts to help you fulfill your responsibilities to create a building that is safe, functional and long-lasting.

Don't take the risk. Take advantage of our Project Management System and be confident your job is done right.

### The Dow Corning Project Management System: Step by step

	YOU PROVIDE...	DOW CORNING PROVIDES...
 <b>Blueprint review</b> <i>Mitigate design risk</i>	Project checklist and other project information – system type, drawings, etc.	Review of project parameters and joint design with comments and sealant usage approval
 <b>Lab testing</b> <i>Mitigate material risk</i>	Representative substrate samples for adhesion, compatibility and nonstaining testing	Recommendations for surface preparation, compatibility and nonstaining elements
 <b>Quality assurances</b> <i>Mitigate workmanship risk</i>	Documentation showing applicator is following Dow Corning manuals and Technical Service Laboratory recommendations	Training and/or audit to promote project best practices (applicator collects production quality control/traceability and production parameters/test results)
 <b>Documentation and warranty</b> <i>Guarantee your work</i>	Warranty request, including all quality control and traceability elements linked to the specific project	Performance warranty if all Project Management System requirements are satisfied



## Get an edge with Dow Corning

From product selection to application or installation, Dow Corning attends to your needs to provide you with many advantages that can help your business get ahead of your competitors:

- **Meet build schedules and quality targets** with proven materials that work together to improve productivity, deliver specified performance, and comply with current and future code-related regulations
- **Reduce defects and installation callbacks** with products that are easy to use and apply, supported by world-class application training and assistance meeting building-performance standards
- **Surpass capabilities of alternative building products** with superior silicone materials
- **Minimize or eliminate problems** in product selection and installation with broad technical support, Color It Right sealant options, on-site services and industry-leading product performance warranties
- **Meet local and regional standards** (GB, ETAG, ASTM) with expertise tailored to your fabrication and project location
- **Ensure application excellence** as a member of our *Quality Bond*<sup>™1</sup> program or with our project management services  
<sup>1</sup>Quality Bond<sup>™</sup> is not available in North America.
- **Ease project management** with COOL – CONstruction OnLine e-tools
- **Follow expert recommendations and guidance** in detailed technical manuals



Europe



Asia



Americas

## Blueprint Review

### Identify risks before construction begins

All successful structural silicone glazing projects begin with a sound plan. As the first component of our Project Management System, Dow Corning can review your design and recommend design and material enhancements to optimize structural glazing and weatherproofing performance as well as substrate compatibility. This review will help you:

- **Meet project safety and design requirements** by checking the dimensions (bite/glueline) of specified structural sealants and weatherproofing sealants
- **Meet construction requirements** by confirming normal curing of structural sealants
- **Confirm suitability** of sealants with substrates by identifying other building materials that come in contact
- **Confirm function** of specified sealants in joints



A designer's reputation and legacy rest on buildings that last for generations. Dow Corning experts can review your plans to **ensure there are no compromises on performance** that could damage that reputation.

# Lab Testing

## Reduce material performance uncertainties

Once a structural silicone glazing design is reviewed and approved by all parties, the next important step is making sure the specified material will perform as expected in the field. Dow Corning can provide you with written confirmation as proof of stringent testing for:

- **Adhesion:** Products can be tested at your job site or on representative materials, including glass, metal, masonry and spacers. Based on the results, our experts can provide additional product recommendations and suggest surface preparation techniques and primer options as appropriate.
- **Compatibility:** Materials are tested for compatibility with accessory materials such as gaskets, spacers and setting blocks to help you avoid discoloration or possible loss of adhesion.
- **Staining:** To help you avoid damage to expensive stonework, Dow Corning can determine whether fluids will migrate into porous stone and cause staining.



Worldwide testing facilities ensure availability of local support.



Product failure can lead to structural damage that can pose potential danger to occupants.

**Dow Corning can help make sure you specify the right product** for your application to minimize those risks.



*"Granddaddy of Structural Glazing"  
(1971 – the world's first four-sided  
structural silicone application)*

*455 W. Fort St., Detroit, Michigan, USA*

*Architect: Smith, Hinchman & Grylls*

Studies demonstrate longevity in excess of 50 years:

- 25-year-old *Dow Corning*® 983 Silicone Structural Glazing Sealant (installed at ift Rosenheim Institute, Rosenheim, Germany, in 1985) passed ETAG 002-1 testing and was theoretically proven for an additional 25 years.
- Severe durability testing by the Federal Institute for Materials Research and Testing (BAM) confirms long-term durability of *Dow Corning*® 993 Silicone Structural Glazing Sealant, completing 50 cycles equivalent to 50 years.



# On-Site Quality Checks

## Enhance confidence in your application

The design is sound, and the correct product has been selected. But none of that matters if the product is not applied in the specified manner. Whether your project includes weatherproofing sealant or structural sealant, the Dow Corning Project Management System includes a series of systematic quality-control checks that may help detect application issues such as improper cleaning, use of improper primer, poor primer application, improper joint configuration or even problems with equipment. Tests include:

- **Sealant storage conditions check:**

Dow Corning can check to ensure your storage conditions are appropriate for silicone sealants to maximize effectiveness and shelf life.

- **Sealant quality-control tests:**

A broad range of tests can ensure the specified sealants have been mixed and applied properly at the job site so you can be confident the anticipated results will become reality.

- **Deglazing test:** Deglazing is carried out on glass, panel and frames attached with structural silicone. This important test involves completely detaching the panel from the frame to confirm good adhesion to both and to verify proper fill of the structural joint. Panel and frame surfaces are not damaged during testing.

All field testing should be documented for warranty purposes using an Adhesion Testing Log. Dow Corning can provide your applicator with best practices for cleaning, priming and application to help ensure success.

### Some key quality-control tests:



Butterfly



Snap time



Snake



Mix ratio



Peel-in-adhesion

As part of the Dow Corning

Project Management System,

**our experts will work  
with you on-site**

to ensure your designs are followed  
and the specified product is mixed and  
applied correctly.

# Warranty

## Certify your workmanship

When all steps of the Dow Corning Project Management System are followed and documented, your project may qualify for a performance warranty. More than a product warranty, which assures products meet the sales specifications in effect at the time of shipment, a performance warranty is a project-specific guarantee of material performance in a particular application – and a testament to the planning and quality assurance management of your construction project.

Dow Corning experts can help your quality assurance engineer develop the logs that must be maintained to qualify for a performance warranty. To be eligible for a warranty, all Dow Corning Project Management System structural sealant application inspection records should include:

- Structural bite size
- Adhesion of silicone sealant with glass and frame
- Joint type and condition of sealant applied
- Sealant appearance and uniformity of color, bubbles, etc.

For more information on warranty requirements and coverage, contact your local Dow Corning representative.



## It all starts with the right applicator.

Selecting the best team is critical for a successful build. Choosing a Dow Corning-certified *Quality Bond™* applicator helps you with one of the most important decisions you will make during the development of your project.

The comprehensive *Quality Bond™* program (not available in North America) brings together property developers, architects, consultants, engineers, fabricators and applicators. The entire team has access to Dow Corning's extensive know-how in silicone bonding applications for high-performance buildings to help provide a solution to nearly any challenge.



When you specify a *Quality Bond™* member, you are tapping into Dow Corning's industry-leading expertise – and creating a structure that will delight its occupants and build your reputation.





# Learn More

Talk to a Dow Corning representative to learn how you can receive the benefits of the Dow Corning Project Management System for your building project. Find local contact information at [dowcorning.com/ContactUs](http://dowcorning.com/ContactUs).

Dow Corning Building and Construction Solutions include proven and innovative materials for structural and protective glazing, weatherproofing, insulating glass, high-efficiency insulation, and window and door fabrication. To learn more about high-performance building solutions from Dow Corning, visit our website at [dowcorning.com/construction](http://dowcorning.com/construction).

Photos: Cover – AV19261; Page 2 – dow\_40642242413; Page 3 – AV25793, dow\_40642238463, dow\_4066422449588, dow\_40642219884, dow\_40642227999; Page 4 – dow\_40642232434, dow\_40642232130; Page 5 – AV22644, AV03865, AV06779, dow\_40079520901 (Courtesy of SmithGroupJJR); Page 6 – AV25308; Page 7 – dow\_40642233221, AV07510, dow\_40261225781; Page 8 – AV25722

#### HANDLING PRECAUTIONS

PRODUCT SAFETY INFORMATION REQUIRED FOR SAFE USE IS NOT INCLUDED IN THIS DOCUMENT. BEFORE HANDLING, READ PRODUCT AND SAFETY DATA SHEETS AND CONTAINER LABELS FOR SAFE USE, PHYSICAL AND HEALTH HAZARD INFORMATION. THE SAFETY DATA SHEET IS AVAILABLE ON THE DOW CORNING WEBSITE AT [DOWCORNING.COM](http://DOWCORNING.COM), OR FROM YOUR DOW CORNING SALES APPLICATION ENGINEER, OR DISTRIBUTOR, OR BY CALLING DOW CORNING CUSTOMER SERVICE.

#### LIMITED WARRANTY INFORMATION – PLEASE READ CAREFULLY

The information contained herein is offered in good faith and is believed to be accurate. However, because conditions and methods of use of our products are beyond our control, this information should not be used in substitution for customer's tests to ensure that our products are safe, effective and fully satisfactory for the intended end use. Suggestions of use shall not be taken as inducements to infringe any patent.

Dow Corning's sole warranty is that our products will meet the sales specifications in effect at the time of shipment.

Your exclusive remedy for breach of such warranty is limited to refund of purchase price or replacement of any product shown to be other than as warranted.

**TO THE FULLEST EXTENT PERMITTED BY APPLICABLE LAW, DOW CORNING SPECIFICALLY DISCLAIMS ANY OTHER EXPRESS OR IMPLIED WARRANTY OF FITNESS FOR A PARTICULAR PURPOSE OR MERCHANTABILITY.**

**DOW CORNING DISCLAIMS LIABILITY FOR ANY INCIDENTAL OR CONSEQUENTIAL DAMAGES.**

®™ Trademark of The Dow Chemical Company ("Dow") or an affiliated company of Dow. Dow Corning is a registered trademark of Dow Corning Corporation. The Corning portion of the Dow Corning trademark is a trademark of Corning Incorporated, used under license. *Quality Bond* is a trademark of Dow Corning Corporation. ©2017 Dow Corning Corporation, a wholly owned subsidiary of The Dow Chemical Company. All rights reserved.

30024762

Form No. 63-6325A-01

